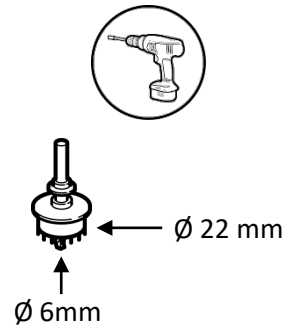
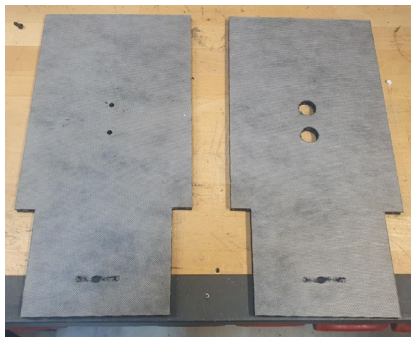
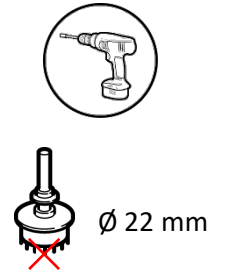
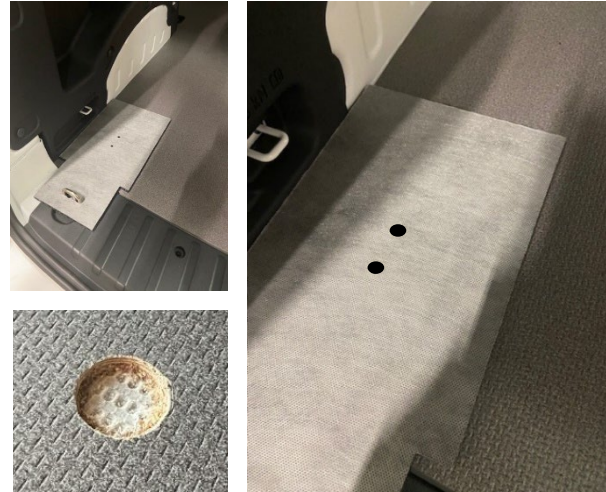


Designed for kits with the following lengths:
 1458 mm / 1485 mm / 1512 mm / 1593 mm / 1620 mm

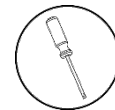
1 Drill larger holes in the template using a hole saw with center drill.



2 Position the template in the vehicle, remove the center drill and drill carefully down to the honeycomb.



3



Remove plastic parts from the drilled hole.

4



Place the spacers in the drilled holes.

5

Position the kit.



6

Remove the lashing eyelet.
Position the front bracket with the spacers and secure it with two M8x40 bolts.
Use M6 bolts (not included) to mount it to the kit.



7

Position the rear bracket (long or short depending on kit) and secure it with two bolts M8x40.
Use M6 bolts (not included) to mount it to the kit.

